



CIFS (Common Internet File System) Function

CIFS includes FTP functions and can use files on the remote place (FTP server) as use files in a local device. From CIFS function, user can use Real-time PVR recording, File playback (without downloading), SW upgrade.

1. <File Manager>

From File Manager menu, files can be copied between devices or operated within a device. File selection, file operation, and location selection can be operated within the current file list window of File Manager menu. For copy of files, the currently active window is the source whereas the opposite window is the target.

- RED: Select files to be operated. Multiple files can be selected.
- GREEN: Files to be copied from file list window
- YELLOW: Files to be deleted from file list window
- BLUE: Toggle between file list window



<Location>

From the Location List, each device can be selected, and storage device such as USB or eSATA, as well as User DataBase of Flash Memory and FTP server and CIFS function can be selected.

- SATA: eSATA storage device
- USB: USB storage device
- User DB: Flash User DataBase
- FTP: FTP Server
- CIFS: CIFS Connection Info



<CIFS Connection>

To use CIFS location, users should have the following CIFS Connection information.

- Session: FTP server URL or IP address
- User: User ID to access FTP server
- Password: Password to access FTP server
- Share: Share Directory





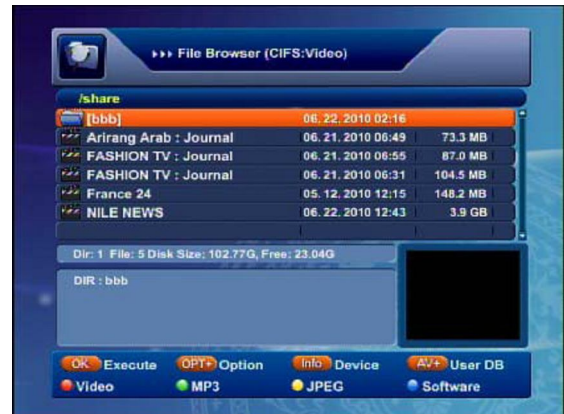
<Option>

- Directory Create: Create directory
- Sort: File list Sort (Alphabet/Size)



2. <File Browser>

You can select the storage device and CIFS function with INFO key. You can do the additional functions with OPT+ key. In these functions you can delete file and you can sort file lists by Alphabet, Date, or Size.



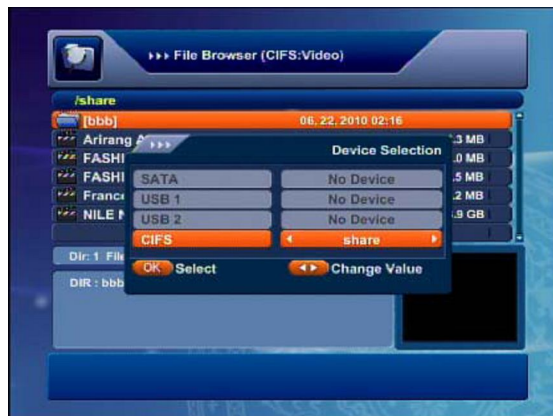
- **First** : Playback from first position
- **Continues** : Playback from last stop position



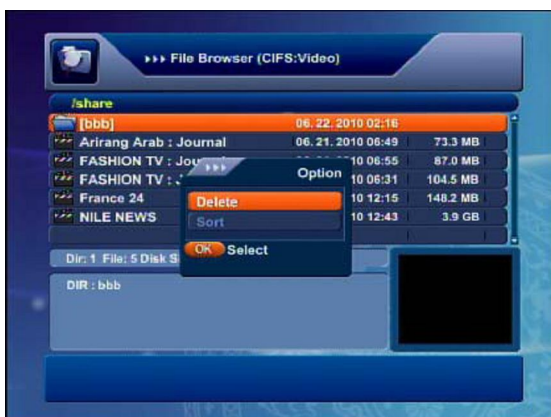


- **Red:** Video (Video Files List), **Green:** MP3 (MP3 Files List),
- **Yellow:** JPEG (JPEG Files List), **Blue:** Software (Software Files List)

You can select the storage device and CIFS function with INFO key.



You can do the additional functions with OPT+ key. In these functions you can delete file and you can sort file lists by Alphabet, Date, or Size.



3. <PVR Setup>

You can change the PVR configuration in PVR Setup menu. To enter this menu, press MENU key in normal mode, and go to Channel / PVR menu, then select PVR Setup.

- **Time Shift:** Configuration for recording the current channel automatically.

If you set Time Shift to Enable(1 or 2 Hour), you can use time shift without recording a channel explicitly.

- **Default PVR Path:** Configuration for selecting the default recording device. If you attached the storage -SATA, USB-device, CIFS then you can select the default recording device.

- **Record Duration:** Configuration for default user record duration. If you select 2 Hour, then you can record a 2-Hour of channel when you record.

